

# Endoca Certificate of Analysis

**CBD GUMMIES "NIGHT TIME" 40 MG CBD, 15 MG CBN BLACKCURRANT**

**ENDOCA LAB**  
30 N Gould St, Sheridan, Wyoming 82801 USA  
Phone: +45-535-573-37  
Email: ionmaps@protonmail.com

**Responsible Supervisor:**  
**Sample**  
**Date of production:**  
**Date analysis began:**  
**Date sample report produced:**  
**Expiry date:**  
**Product ID:**

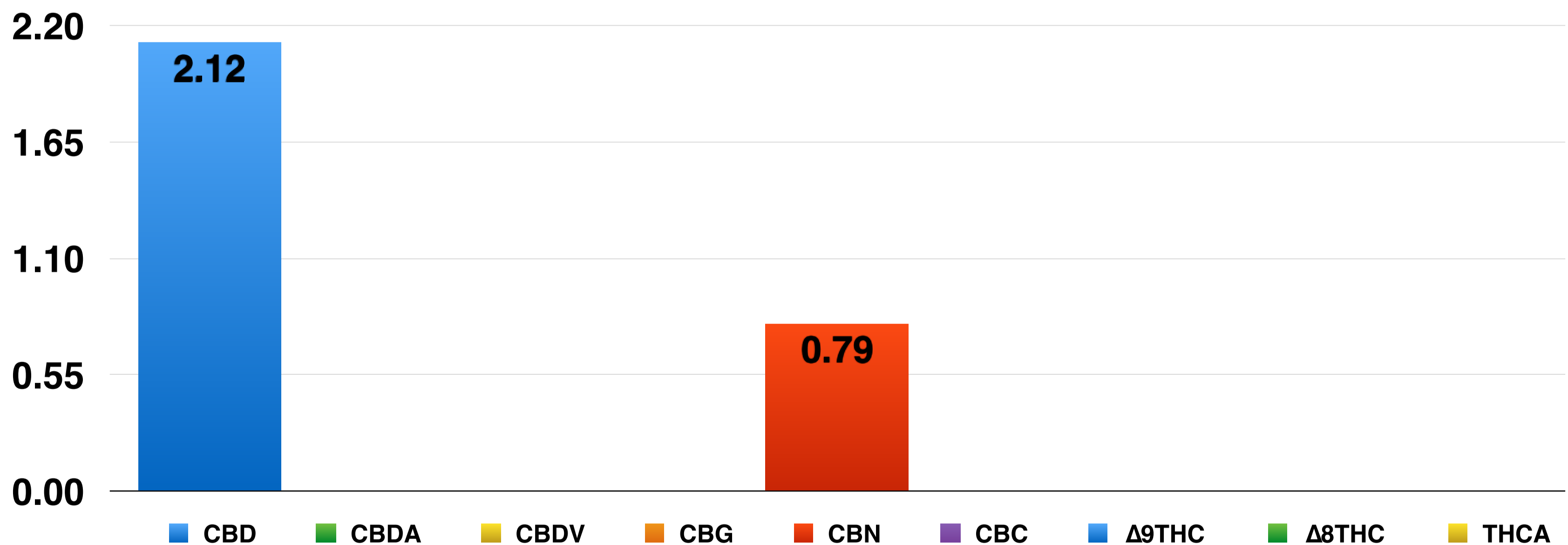
Osvald P.  
Batch# 10GSL  
13-October 2025  
13-October 2025  
14-October 2025  
10-2027  
6018

## Cannabinoid Profile

Component	Mass (%)	Amount (mg/g)
CBD	2.12	21.20
CBDA	ND	ND
CBDV	ND	ND
CBG	ND	ND
CBN	0.79	7.90
CBC	ND	ND
Δ9THC	ND	ND
Δ8THC	ND	ND
THCA	ND	ND

ND - Not Detected, LOD - Limit of Detection (LOD=0.001%)

## Cannabinoids as Percent of Total Mass



# Endoca Certificate of Analysis

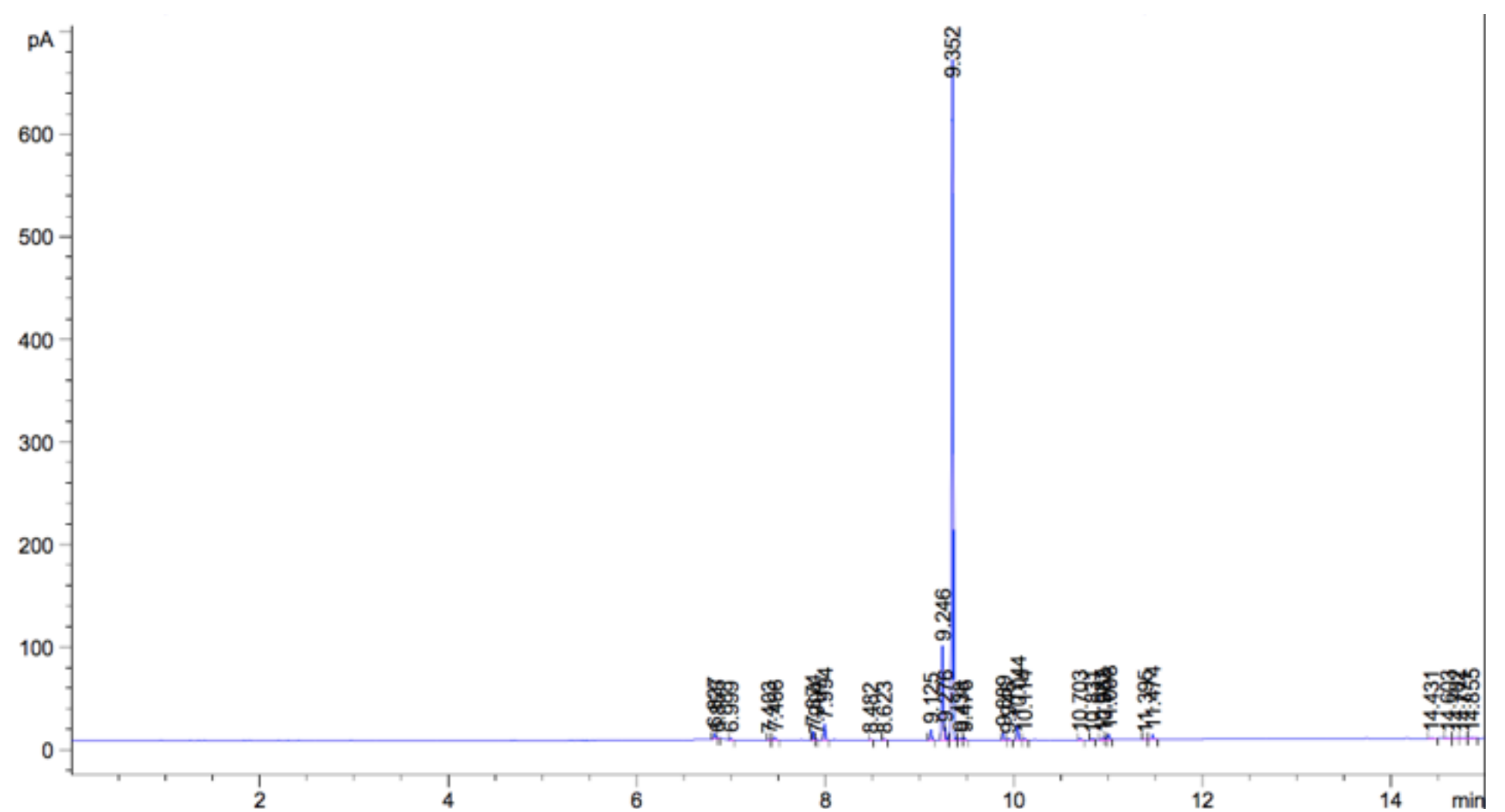
**CBD GUMMIES "NIGHT TIME" 40 MG CBD, 15 MG CBN BLACKCURRANT**

**ENDOCA LAB**  
30 N Gould St, Sheridan, Wyoming 82801 USA  
Phone: +45-535-573-37  
Email: ionmaps@protonmail.com

Responsible Supervisor:	Osvald P.
Sample	Batch# 10GSL
Date of production:	13-October 2025
Date analysis began:	13-October 2025
Date sample report produced:	14-October 2025
Expiry date:	10-2027
Product ID:	6018

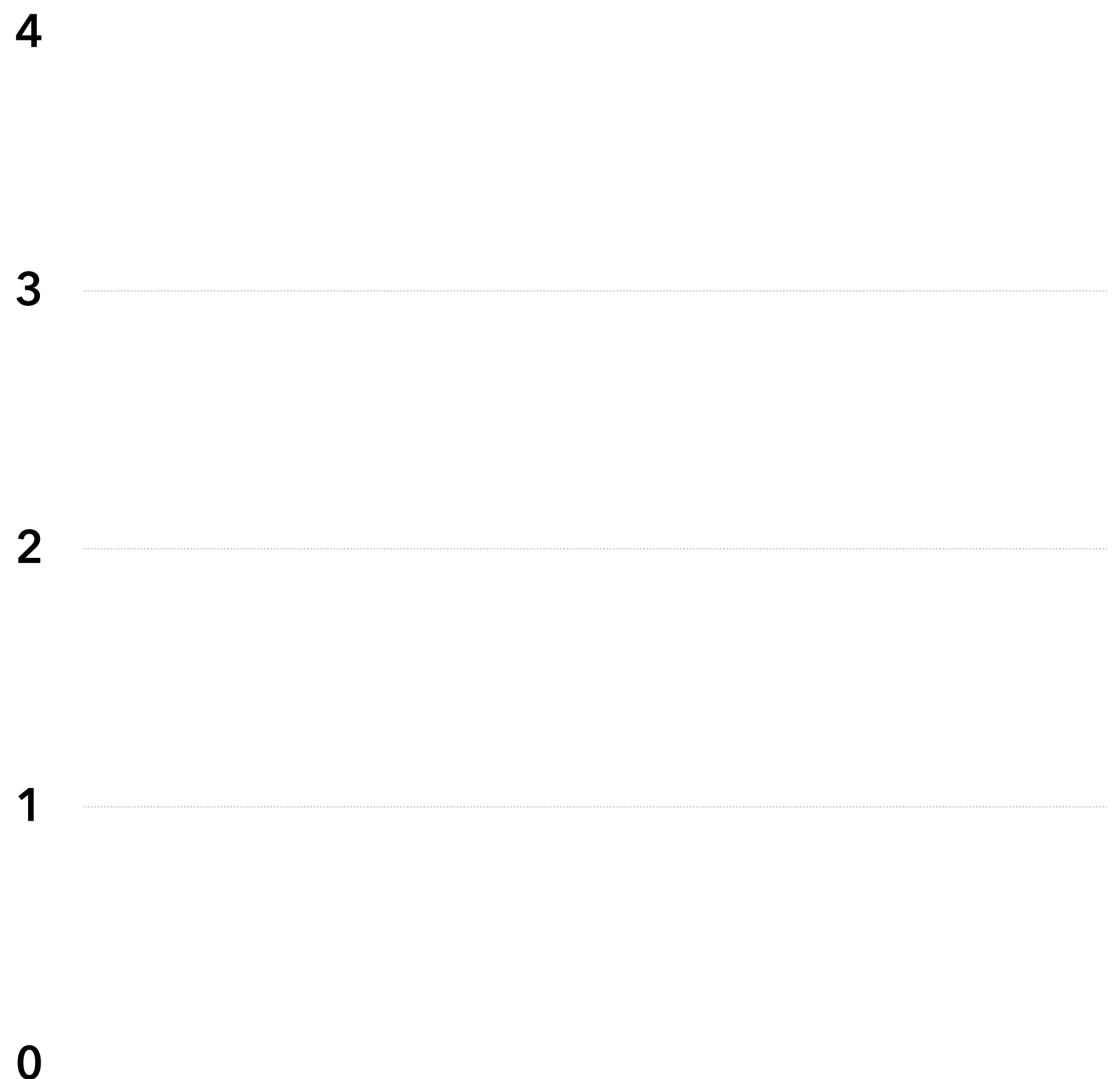
## Terpenoid Profile:

Component	Amount %
β-Caryophyllene	<0.01
α-Humulene	<0.01
Caryophyllene oxide	<0.01
Myrcene	<0.01
α-Pinene	<0.01
Terpinolene	<0.01
Humulene epoxide II	<0.01
Limonene	<0.01
β-Pinene	<0.01
E-β-Ocimene	<0.01
Sabinene	<0.01
Linalool	<0.01



## Terpenoid Distribution

- β-Caryophyllene
- α-Humulene
- Caryophyllene oxide
- Myrcene
- α-Pinene
- Terpinolene
- Humulene epoxide II
- Limonene
- β-Pinene
- E-β-Ocimene
- Sabinene
- Linalool



Endoca  
**Certificate of Analysis**  
 CBD GUMMIES "NIGHT TIME" 40 MG CBD, 15 MG CBN BLACKCURRANT

ENDOCA LAB  
 30 N Gould St, Sheridan, Wyoming 82801 USA  
 Phone: +45-535-573-37  
 Email: ionmaps@protonmail.com

Responsible Supervisor:	Osvald P.
Sample	Batch# 10GSL
Date of production:	13-October 2025
Date analysis began:	13-October 2025
Date sample report produced:	14-October 2025
Expiry date:	10-2027
Product ID:	6018

**Microbial Profile:**

Component	Mass (%)	Amount (mg/g)
<i>Candida albicans</i>	1 g	Not Detected
<i>Escherichia coli</i>	1 g	Not Detected
<i>Pseudomonas</i>	1 g	Not Detected
Staphylococcus	1 g	Not Detected
Yeast	CFU	<1 x 10 <sup>1</sup>
Mould	CFU	<1 x 10 <sup>1</sup>

**All Mycotoxins at  
 Non Detectable (ND) levels**



**Conclusions:**

All microbial residues including Listeria, Monocytogenes, E-Coli, Fungi, Salmonella and Molds are all below detectable thresholds

Endoca  
**Certificate of Analysis**

**CBD GUMMIES "NIGHT TIME" 40 MG CBD, 15 MG CBN BLACKCURRANT**

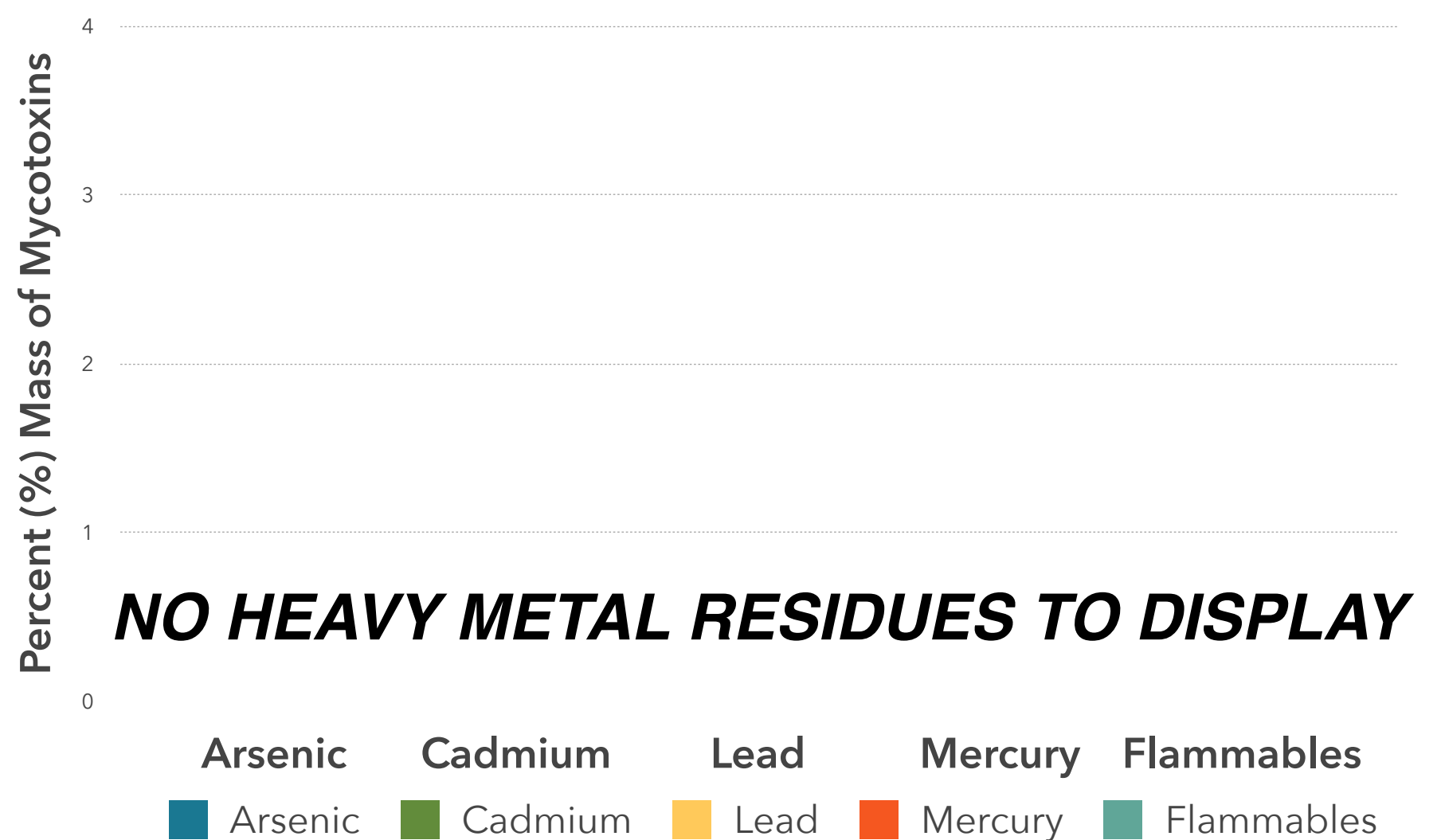
ENDOCA LAB  
30 N Gould St, Sheridan, Wyoming 82801 USA  
Phone: +45-535-573-37  
Email: ionmaps@protonmail.com

Responsible Supervisor:	Osvald P.
Sample	Batch# 10GSL
Date of production:	13-October 2025
Date analysis began:	13-October 2025
Date sample report produced:	14-October 2025
Expiry date:	10-2027
Product ID:	6018

**Heavy Metals Profile:**

Component	Mass (%)	Amount (mg/g)	Limit
Arsenic	< 0.01	ND	ND
Cadmium	< 0.01	ND	ND
Lead	< 0.01	ND	ND
Mercury	< 0.01	ND	ND
Flammables	< 0.01	ND	ND

**All Heavy Metals at Non Detectable (ND) levels**



**Conclusions:**

**No heavy metal residues detected.**

**No flammable residues detected.**

**No chemical residues detected.**